

Irreversible^{Q1} Electroporation of the Pancreas: Definitive Local Therapy Without Systemic Effects

MATTHEW BOWER, MD,¹ LESLIE SHERWOOD, DVM,² YAN LI, MD,¹ AND ROBERT MARTIN, MD, PhD^{1*}

¹Division of Surgical Oncology, Department of Surgery, James Graham Brown Cancer Center, Louisville, Kentucky

²Research Resources Facilities, University of Louisville School of Medicine, Louisville, Kentucky

Background: The use of thermal tumor ablative techniques in the pancreas is limited due to the risk of pancreatitis and damage to major vascular structures. Irreversible electroporation (IRE) is a non-thermal ablation technique that could allow ablation in the pancreas while preserving vital surrounding blood vessels. The aim of this study was to assess the safety and ablation volume of IRE in porcine pancreatic tissue.

Methods: IRE of swine pancreases was performed using an open technique and ultrasound guidance and the animals were followed for 72 hr, 7 days, and 14 days post-IRE.

Results: All pigs underwent IRE, with one pig was unsuccessful after three attempts using at 3,000 V due to inability to achieve a stable current. All animals recovered well and revealed only mild adhesions, no ascites, and no pancreatic necrosis. All animals had transient increases in amylase and lipase that normalized on post-IRE day 3. Pathologic analysis revealed that ablation defects (median size 3 cm × 2.8 cm) were seen in electroporated areas with significant destruction of the pancreatic tissue with patent vascular structures.

Conclusions: This animal model demonstrates that IRE of the pancreas performed at an optimal voltage is well tolerated, with rapid resolution of pancreatic inflammation and preservation of vascular structures.

J. Surg. Oncol. 2011;103:1–7. © 2011 Wiley-Liss, Inc.

KEY WORDS: pancreas; irreversible electroporation; ablation; cancer

INTRODUCTION

Ablative techniques such as radio frequency ablation (RFA) and microwave ablation have been widely used in treatment of patients with liver, lung, and kidney tumors. Ablative methods are limited in that they rely upon the indiscriminate use of thermal energy to induce necrosis of tumor cells, a process that can result in damage to nearby structures including blood vessels, bile ducts, and nerves. In addition, the blood flow of large vessels creates a heat sink effect that severely inhibits the ability to ablate cancer cells in the vicinity of large vessels [1]. These limitations are especially relevant to the pancreas which lies immediately adjacent to the superior mesenteric artery, portal vein, and common bile duct. Furthermore, the use of ablative therapies in the pancreas has largely been avoided altogether due to the possibility of thermal injury induced pancreatitis [2].

Irreversible electroporation (IRE) is an emerging technology for non-thermal tumor ablation. Electroporation utilizes targeted delivery of millisecond electrical pulses to induce permeabilization of cell membranes through nanoscale defects. Reversible electroporation has long been used as a technique for electroporation of genetic material or intracellular drug delivery [3–6]. When the energy of the pulses is increased above a certain electric field threshold, the permeabilization becomes irreversible resulting in apoptosis [7]. This process leads to cell death but does not injure the extracellular matrix; thus allowing cellular tumor ablation while preserving structural components of tissues such as blood vessels [8–11]. IRE has been demonstrated to be successful in ablating cutaneous tumors in mice [12]. Animal models of tumor ablation using IRE have also been studied in rat and pig liver^{Q2} [9,10], canine prostate [13], and canine brain [14].

IRE might potentially be used to safely ablate tumors of the pancreas with minimal damage to vascular or biliary structures. In the present study, a porcine model is used to investigate the safety, feasibility, and pathologic results of IRE ablation in the pancreas.

METHODS

Animals

This study was conducted in accordance with the National Institutes of Health guidelines for the care and use of animals in research, and the protocol was approved by the Animal Care and Use Committee of the University of Louisville. The University of Louisville animal care and use program is fully accredited by the American Association for Accreditation of Laboratory Animal Care, International. Six female all-white Yorkshire x Landrace swine (*Sus scrofa*) from Oak Hill Genetics, (Ewing, IL) were obtained at 8–10 months of age, weighing 85–90 kg at the time of arrival. During quarantine and acclimation animals were group-housed in pens with elevated fiberglass slatted floors providing a minimum 20 ft² per animal in a temperature (20.0–22.0°C) and humidity (30–70%) controlled room on a 12:12 hr light:dark cycle. Animals were housed individually in pens providing a minimum 24 ft² post-operatively, however, visual contact with conspecifics was maintained. Pens were cleaned daily and animals were fed 5084 Laboratory Porcine Diet Grower (LabDiet[®], PMI[®] Nutrition International, Richmond, IN) twice daily in amounts recommended by the manufacturer. Animals were provided with filtered tap water ad libitum from arrival

Grant sponsor: AngioDynamics, Inc.

This paper presented at the Academic Surgical Congress, San Antonio, TX; February 6, 2010.

*Correspondence to: Robert Martin, MD, PhD, 315 East Broadway, Rm 313, Louisville, KY 40202. Fax: 502-629-3030. E-mail: robert.martin@louisville.edu

Received 20 December 2010; Accepted 7 February 2011

DOI 10.1002/jso.21899

Published online in Wiley Online Library (wileyonlinelibrary.com).

TABLE I. All Porcine Animals Who Underwent IRE of Pancreas

Animal no.	Harvest interval	Electrode	Probe spacing (cm)	Probe length (cm)	Volts	Pulse length (μ sec)	Current range (amp)		Comments	Pulses delivered
							Low	High		
1	3 days	Monopolar	2.0	3.0	3,000	100	40	50	Over current shut off	33
		Monopolar	2.0	3.0	3,000	50	18	50	Over current shut off	44
		Monopolar	2.0	2.0	3,000	50	Lost	Lost	Aborted due to movement	30
		Monopolar	2.0	2.0	2,400				Charge/discharge error	0
2	3 days	Bipolar	0.8	0.7	2,700	70	14	24		90
3	7 days	Monopolar	1.5	3.0	2,300	100	28	32		90
4	7 days	Bipolar	0.8	0.7	2,700	70	11	20		90
5	14 days	Monopolar	2.0	2.0	3,000	100	25	50	Over current shut off	18
		Monopolar	2.0	2.0	2,000	100	17	22		90
6	14 days	Monopolar	1.5	2.0	2,300	100	23	47	Over current shut off	25

throughout the end of the study. Animals were specific pathogen free for the following pathogens: *Actinobacillus pleuropneumoniae*, *Mycoplasma pneumoniae*, Porcine Reproductive and Respiratory Syndrome, Atrophic Rhinitis, Pseudorabies virus, and Acute Malignant Hypothermia. Animals were free of internal and external parasites. Before any experimental manipulations were initiated animals were allowed to acclimate for at least 7 days. Veterinary staff assessed the animals before and after each procedure for general health, vital signs, oral intake, urine and fecal output, and for pain every 2 hr for the first 6 hr post-operatively and then every 12 hr until euthanasia. Baseline complete blood cell counts (CBC) and serum biochemistries were performed prior to surgery.

Ablation Technique

Fentanyl transdermal patches (50 μ g/hr, Ortho-McNeil-Janssen Pharmaceuticals Inc., Raritan, NJ) were applied over the shoulders of the animals the evening before surgery. The animals were fasted for 12 hr, access to water was not restricted. The animals were anesthetized with subcutaneous 4.4 mg/kg Telazol[®] (Fort Dodge Animal Health[®], Overland Park, KS), 2.2 mg/kg Ketamine (Fort Dodge Animal Health[®]), and 2.2 mg/kg Xylazine (Butler Animal Health[®], Dublin, OH). The animals were then intubated and maintained on 1–3% Isoflurane (Butler Animal Health[®]) and 100% oxygen. Artificial Tears[®] ophthalmic ointment (Butler Animal Health[®]), was applied to the surface of both eyes. Body temperature was maintained with a warm air circulating blanket (Bair Hugger[®], Arizant Healthcare[®], Eden Prairie, MN). A 20-gauge intravenous catheter was placed in the marginal ear vein and 10 ml/kg/hr Normosol-R[®] (Hospira[®], Lake Forest, IL) was administered to maintain blood pressure. Each animal received 2 mg/kg Carprofen IV (Pfizer Animal Health[®], New York, NY), and 0.04 mg/kg Buprenorphine IV (Butler Animal Health[®]) for analgesia prior to surgery. The animals were placed on mechanical ventilation and heart rate, body temperature, SpO₂, reflexes, and blood pressure were monitored continuously throughout the anesthetic procedure to maintain the animals in a surgical plane of anesthesia. To control muscle twitches during IRE, 30 mg succinylcholine (Butler Animal Health[®]) was administered IV and was readministered as needed during the procedure based on muscle twitches of the animal. Each animal was placed in dorsal recumbency; a 7 French polysulfone vascular access port (VAP, Access Technologies[®], Skokie, IL) was implanted in the external jugular vein for refinement of blood collection, as well as drug and fluid administration post-operatively. The VAPs were exteriorized on the dorsal neck due to the relatively short duration of the study and to minimize potential pain and distress to the animals of repeated daily access. Access to the pancreas was made through a ventral midline incision.

Ablations were performed using 19-gauge monopolar electrodes or 16-gauge bipolar electrodes. The electrodes were placed within the pancreas in 1-mm proximity of the portal vein or mesenteric artery using continuous ultrasound guidance. Monopolar electrodes were spaced at varying intervals of 1.5 cm or 2.0 cm using an attached spacing device. The depth of exposed electrode was also varied depending on the vascular anatomy and size of the pancreas available.

The IRE current generator (NanoKnife[™]; AngioDynamics[®]; Queensbury, NY) Energy output – 3 kV, 50-amp maximum energy output) was synchronized to deliver electrical pulses coordinated with the pig's cardiac rhythm in order to prevent cardiac dysrhythmias. Each ablation began with a test pulse at 10% planned energy output to assess that an adequate current was achieved. Following successful test pulse, the therapeutic pulses were then delivered. As has been previously reported in prior animal models, the goal of treatment is to deliver 90 electrical micro-second pulses in groups of 10, with a pulse duration of 100 μ sec and a pulse interval of 250 msec. These parameters were chosen as a conservative estimate

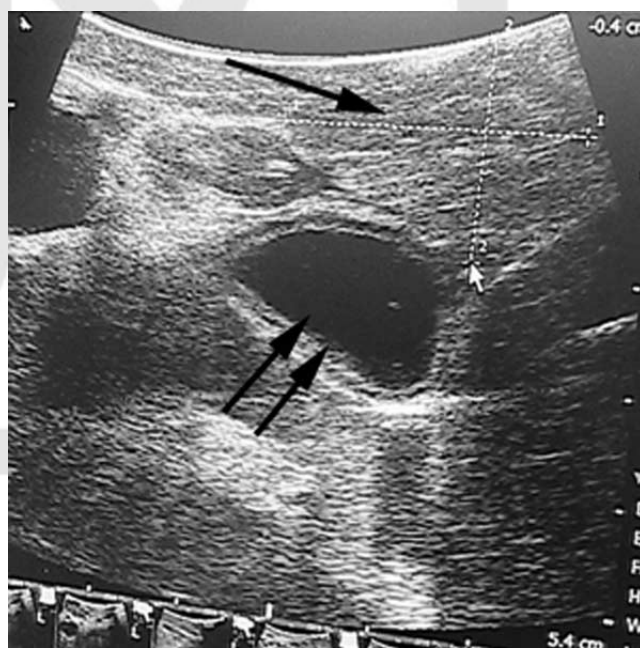


Fig. 1. Ultrasound image after IRE to porcine pancreas with degree of electroporation (single arrow) and intake portal vein (two arrows).

of the electrical field needed to induce IRE in a pancreatic tumor. The high number of pulses tested the greatest potential thermal damage as well. Ablation sizes were measured as longest length (i.e., along the probe) and longest width, with depth not being able to be assessed since all porcine pancreases are only approx 1.5–2.0 cm deep.

Animal Evaluation

The animals were monitored continuously after the surgical procedure until they were able to be extubated and were fully recovered from anesthesia. The animals were only allowed water in the first 12 hr post-procedure, but they were then advanced to solids as tolerated. Blood glucose measurements were performed at 1, 3, and 5 hr post-ablation to monitor for hypoglycemia. The pigs were followed with daily assessment of activity, pain, and dietary intake. All animals received 4 mg/kg carprofen orally, once daily for 48 hr post-operatively in addition to transdermal Fentanyl patches which remained in place for 72 hr post-operatively for analgesia. VAPs were maintained by daily flushing with sodium chloride (Butler Animal Health[®]) following blood collection and were locked with a 2% tauridine-citrate lock solution (Access Technologies[®]). Daily laboratory analysis was conducted that included liver enzymes,

amylase, lipase, cholesterol, complete blood count, BUN, and creatinine. Two pigs each were euthanized at intervals of 72 hr, 7 days, and 14 days post-procedure. Pigs were anesthetized with Telazol, Ketamine, and Xylazine subcutaneously as previously described, intubated and maintained on 1–3% Isoflurane. Each animal received 20,000 IU Heparin IV (Butler Animal Health[®]), and was then euthanized with 2 mmol/kg Potassium chloride IV (Butler Animal Health[®]). Necropsies were performed and pancreatic tissue was harvested, along with portions of the adjacent portal vein, mesenteric artery, and bile duct.

Tissue Histology

Following harvest, tissues were serially sectioned at 5-mm intervals, fixed in 10% neutral buffered formalin, and embedded in paraffin blocks. Sections were cut and stained with hematoxylin and eosin for microscopic analysis. In order to assess for areas of apoptosis, terminal transferase dUTP nick end labeling (TUNEL) assays were performed on select sections using a In Situ Apoptosis Detection Kit (ApopTag; Intergen Company, Purchase, NY) according to the manufacturer’s protocol. The TUNEL-positive cells were counted against negative cells under a light microscope at a magnification of 40×, and 6 visual fields were chosen on the ablated areas, areas adjacent

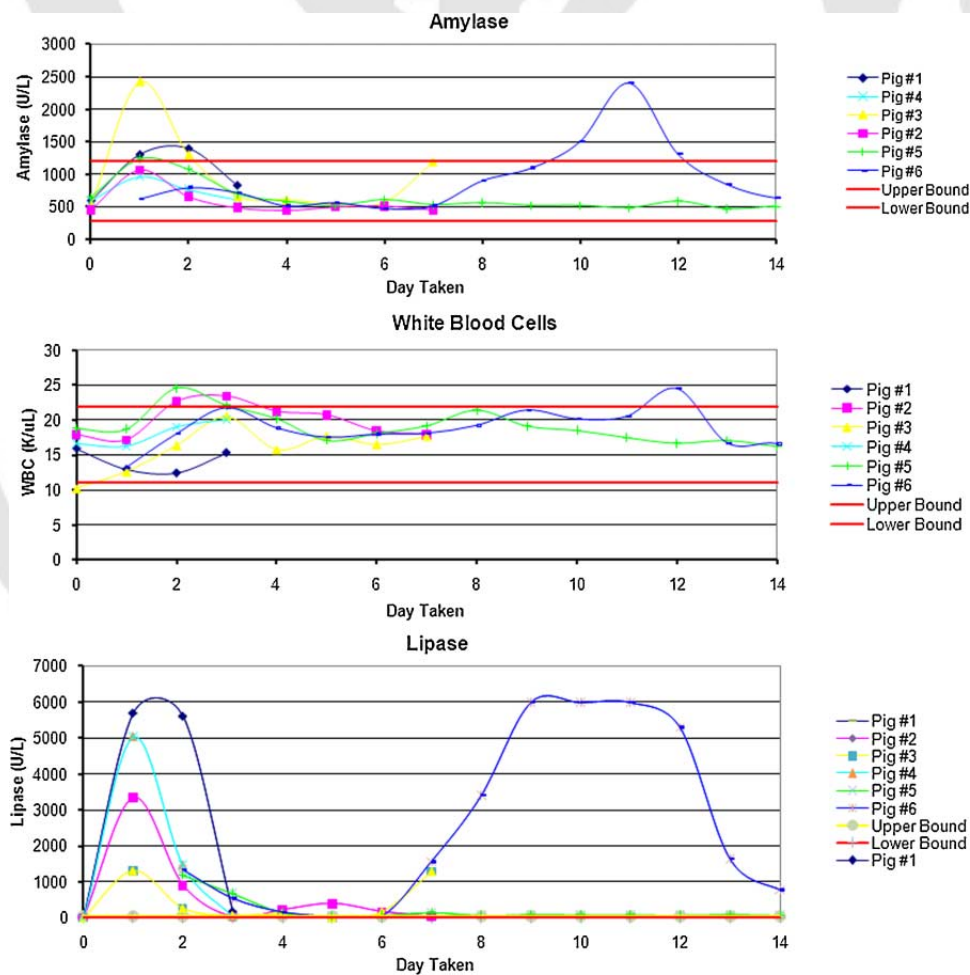


Fig. 2. Serial amylase, lipase, and white blood cell count in all animals on the day of IRE or Pancreas (Day 0) and until euthanasia. Single animal had wound infection on day 8, which required wound opening and antibiotics with resolution of elevated levels.

to the ablation, and random normal pancreatic parenchyma. An apoptotic index (the number of epithelial nuclei labeled by the TUNEL method/the number of total nuclei \times 100) was calculated.

RESULTS

Treatment

A complete treatment was delivered in 4 out of 6 pigs (Table I). Delivery in one pig was unsuccessful using a 3-cm length, 2-cm spaced monopolar probe at 3,000 V due to inability to induce a stable current after three treatment attempts yielded 33, 44, and 30 pulses. The reason for these failed attempts was both the probe exposure (>2 cm in length) and the amount of voltage that was attempting to be delivered. The greater probe exposure increases the resistance and thus leads to greater voltage and a high current warning. Total delivery also failed in a 14-day pig with too closely spaced (1.5 cm) monopolar probes used in the attempt to deliver 2,300 V, with only 25 pulses given. An additional pig had an incomplete delivery at 3,000 V using monopolar electrodes spaced 2 cm, yielding only 18 pulses. A repeat ablation in the same pig at 2,000 V was successful, yielding 90 pulses.

At the conclusion of each ablation, ultrasound evaluation revealed changes consistent with treatment effect (Fig. 1). All pigs tolerated the procedure without immediate complications, and there were no associated cardiac dysrhythmias detected.

Physiologic Outcome

All animals recovered well during the early post-operative phase, and were drinking liquids by 6 hr post-procedure. Pigs in the 7- and 14-day groups received 20 mg/kg Cefazolin (Butler Animal Health[®]) IV, twice daily beginning on POD 3 due to increases in body temperature and elevations in WBC. The pig that failed multiple delivery attempts became anorexic and sluggish while all other animals were active and eating by post-operative day 2.

Supportive care for the anorexic animal included intravenous sodium chloride. All animals developed only transient increases in WBC, amylase and lipase that began to normalize by post-operative day 3 (Fig. 2). One animal that was euthanized at day 14 developed a secondary rise in amylase thought to be related to a wound infection which returned to normal after the wound was opened and packed. BUN and creatinine remained within normal limits for all animals. ALT levels remained elevated throughout for all pigs at 0 to 60 U/L above normal. All animals experienced a transient hypoglycemia at 1 and 3 hr post-operatively that began resolving by 5 hr and was normalized by the first post-operative day. Only two animals required a dose of 100 ml intravenous 5% Dextrose in Sodium Chloride (Butler Animal Health[®]) for blood glucose levels of 40 mg/dl at 3 hr post-operatively. The animals responded well to the dextrose supplement and there were no complications associated with the VAP implants throughout the study.

Pathologic Outcome

Gross findings at necropsy revealed mild adhesions, no ascites, and no pancreatic necrosis. Otherwise there were no significance differences noted between the pigs at the 72-hr, 7-day, and 14-day harvest intervals. On histologic staining there were sharp demarcations of the margins between necrotic ablated areas and the surrounding non-ablated parenchyma (Fig. 3). There was also significant replacement of destroyed pancreatic tissue with infiltrating foamy macrophages. Ablation volumes were consistent across all animals when a monopolar or bipolar probe was used (Table I). Necrosis of pancreatic cells was seen immediately adjacent to vascular structures. Venous as well as arterial structures were widely patent without any evidence of thrombosis at the 72-hr, 7-day, and 14-day time intervals. Results of the TUNEL assay revealed that areas of cell death due to apoptosis were induced by the IRE throughout the ablated areas. The apoptotic index in the ablated tissue was significantly elevated compared to the non-ablated pancreas (Ablation field: 95.3 ± 18.6 vs. Distal field: 3.2 ± 1.5 , $P < 0.05$) (Fig. 4).

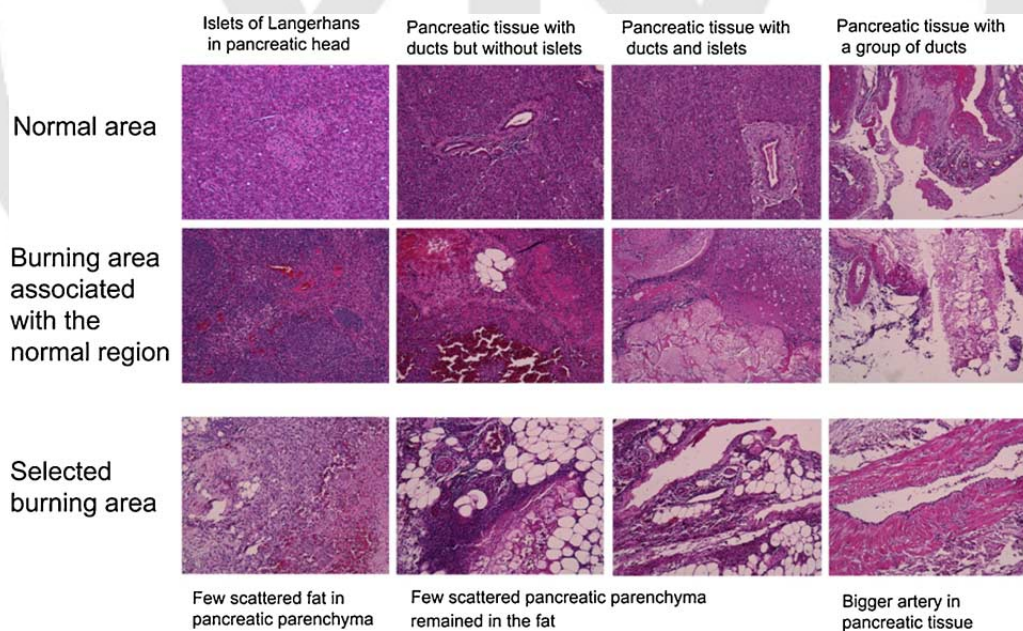


Fig. 3. Day 14 animal H&E staining demonstrating resolving histologic changes in the pancreas as well as intake artery, vein, and pancreatic duct.

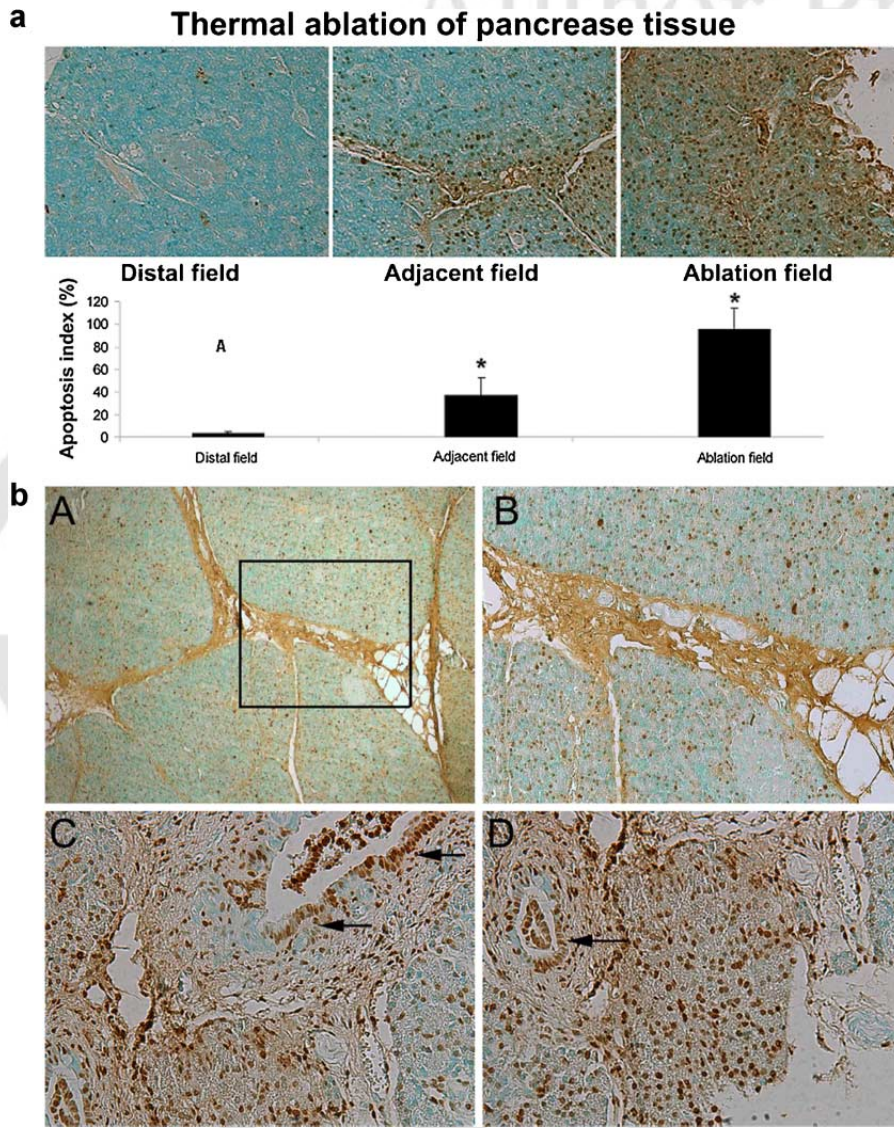


Fig. 4. (a) Extent of Apoptotic index at pancreatic ablated sections from a seven days survival animal. (b) Representative slides of apoptotic pancreatic tissue at low power (A), high power (B), with representative intact pancreatic duct (C, 2 arrows), and higher power pancreatic duct (D, one arrow) with obvious apoptosis ongoing from a 14 day animal.

DISCUSSION

The results of this study provide preliminary evidence that IRE may be safely performed upon the pancreas. This data suggest that adequate pancreatic IRE tumor ablations can be performed without significant risk of inducing clinically significant pancreatitis or surrounding vascular injury-thrombosis. IRE can generate some degree of thermal injury when the resistance to voltage generated reaches a threshold, commonly seen when over electroporation is performed, or when the resistance is over ridden by the treating physician (Fig. 5), which was the etiology of the adverse event in this animal. IRE parameters are designed to minimize the extent of thermal injury as long as precise spacing is confirmed prior to initiating therapy.

We did not observe any discernible differences in outcome based upon probe type and placement other than that the bipolar probes are placed more easily. The goal of electrode placement is to induce an

IRE field that encompasses the entire tumor. The outcome of IRE is influenced by number of parameters including pulse shape, length, frequency, electrical field strength, voltage applied to the electrodes, electrode shape, electrode size, and tissue type [15–17]. However, accurate field prediction based on mathematical models and in vitro studies has been performed for IRE in some tumor types. The predicted IRE parameters are designed to allow prediction of the ablation field, determine maximum ablation, and minimize the thermal effects [17–19]. Such studies have yet to be conducted for tumors of the pancreas.

Accurate prediction of the IRE field may be less of an issue due to the fact that ultrasound imaging reveals tissue changes of the ablation. We were able to easily note a defect in the pancreas tissue by ultrasound following the ablation. Lee et al. performed IRE in porcine livers and visualized the treatment effect by ultrasound. In their experience, the measured ultrasound changes corresponded accurately with the extent of the ablation by histology [20]. Recent

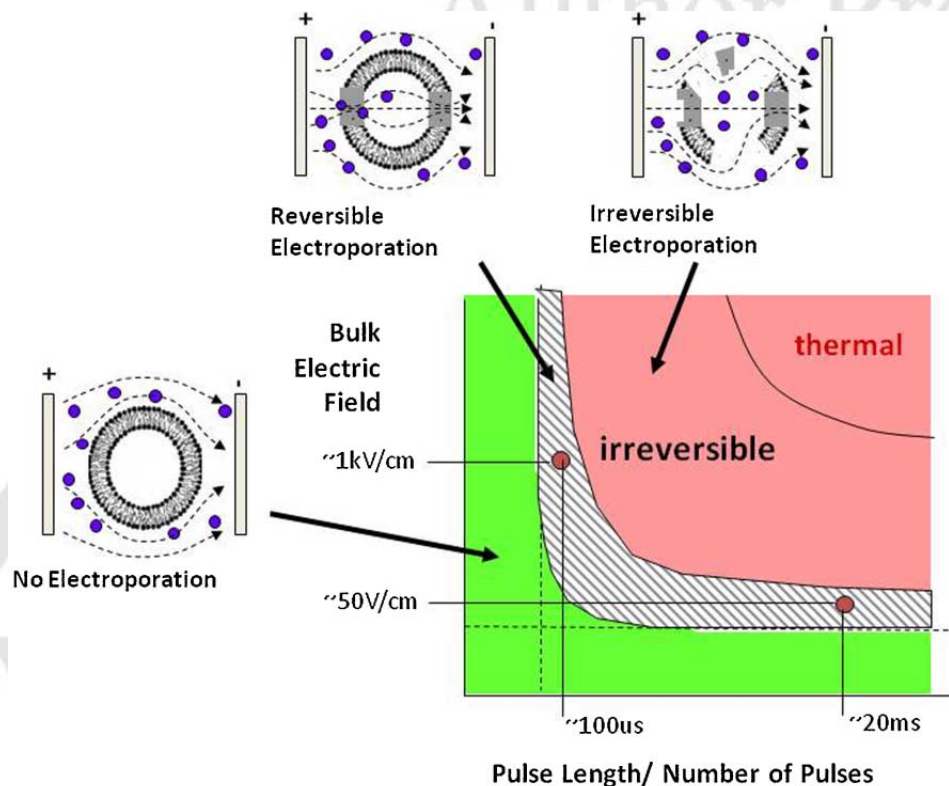


Fig. 5. Zones of reversible, irreversible, and thermal ablation based on pulsed length and electric field.

studies have also offered the intriguing possibility that the effectiveness of tumor ablation may be assessed by post-ablation conductivity measurements, or even determined in real-time imagery of the ablation process using electrical impedance tomography [21].

It is also noteworthy that placement of 16- to 19-gauge electrodes into the pancreas does not lead to pancreatic leak or pancreatitis. Core needle biopsy of the pancreas by open technique is generally avoided due to the high risk of pancreatic leak and pancreatitis. The IRE process itself may have potentially minimized this risk.

Previous ablative therapies have also been utilized in the pancreas with mixed results. The initial results from Goldberg et al. demonstrated that EUS-guided radio frequency can be used in the establishing discrete zones of coagulative necrosis in a porcine model [22]. Similarly, EUS-guided Nd:YAG laser ablation has also been utilized with inducing tissue necrosis with a tissue ablation volume of 314 to 483 mm³ [23]. Alcohol ablation has also been utilized, again with reports of tissue necrosis and EUS guidance [24]. The key difference in all these reported studies and others is that with IRE, immediate tissue necrosis is not the method of action. This could potentially lead to safer application and the ability to avoid relying on the diffusion of therapy (ethanol) or the passive distribution of heat (radio frequency) [2,25–27]. Additional studies, comparisons, and, most importantly, patient validation will remain the deciding factor in determining which of these ablative therapies are optimal.

CONCLUSION

The primary outcome of the present study was establishing the safety and potential use of IRE in the minimally invasive treatment of pancreatic tumors. The histologic results confirm that IRE of the

pancreas leads to cell death with preservation of vascular structures. Furthermore, apoptosis played a key role in the cell death induced by IRE. Cell death through apoptosis potentially avoids the fibrosis, scarring, and loss of tissue architecture that result from coagulative thermal necrosis caused by radio frequency techniques. Future investigations should be conducted to establish the electrical field threshold required for IRE of pancreatic cancer cells. Optimized treatment IRE parameters and protocols for the pancreas also remain to be established.

ACKNOWLEDGMENTS

We would like to acknowledge Nancy Hughes, Amy Branham, and Todd Adams, for providing outstanding surgical support, and pre- and post-operative animal care for the animals used in this study.

Role of the funding source: This study was funded through an unrestricted educational grant from AngioDynamics, Inc., Latham, NY. The study sponsor did not play a role in study design, data acquisition, data interpretation, manuscript preparation, nor decision to submit the manuscript for publication. The sponsor did provide temporary use of IRE equipment for conducting the study.

REFERENCES

1. Patterson EJ, Scudamore CH, Owen DA, et al.: Radiofrequency ablation of porcine liver in vivo: Effects of blood flow and treatment time on lesion size. *Ann Surg* 1998;227:559–565.
2. Date RS, McMahon RF, Siriwardena AK: Radiofrequency ablation of the pancreas. I: Definition of optimal thermal kinetic

- parameters and the effect of simulated portal venous circulation in an ex-vivo porcine model. *JOP* 2005;6:581–587.
3. Granot Y, Rubinsky B: Mass transfer model for drug delivery in tissue cells with reversible electroporation. *Int J Heat Mass Transf* 2008;51:5610–5616.
 4. Escobar-Chavez JJ, Bonilla-Martinez D, Villegas-Gonzalez MA, et al.: Electroporation as an efficient physical enhancer for skin drug delivery. *J Clin Pharmacol* 2009;49:1262–1283.
 5. Prud'homme GJ, Glinka Y, Khan AS, et al.: Electroporation-enhanced nonviral gene transfer for the prevention or treatment of immunological, endocrine and neoplastic diseases. *Curr Gene Ther* 2006;6:243–273.
 6. Andre FM, Gehl J, Sersa G, et al.: Efficiency of high- and low-voltage pulse combinations for gene electrotransfer in muscle, liver, tumor, and skin. *Hum Gene Ther* 2008;19:1261–1271.
 7. Lee RC: Cell injury by electric forces. *Ann N Y Acad Sci* 2005; 1066:85–91.
 8. Davalos RV, Mir IL, Rubinsky B: Tissue ablation with irreversible electroporation. *Ann Biomed Eng* 2005;33:223–231.
 9. Rubinsky B, Onik G, Mikus P: Irreversible electroporation: A new ablation modality – clinical implications. *Technol Cancer Res Treat* 2007;6:37–48.
 10. Edd JF, Horowitz L, Davalos RV, et al.: In vivo results of a new focal tissue ablation technique: Irreversible electroporation. *IEEE Trans Biomed Eng* 2006;53:1409–1415.
 11. Maor E, Ivorra A, Leor J, et al.: The effect of irreversible electroporation on blood vessels. *Technol Cancer Res Treat* 2007;6: 307–312.
 12. Al-Sakere B, Andre F, Bernat C, et al.: Tumor ablation with irreversible electroporation. *PLoS One* 2007;2:e1135.
 13. Onik G, Mikus P, Rubinsky B: Irreversible electroporation: Implications for prostate ablation. *Technol Cancer Res Treat* 2007;6:295–300.
 14. Garcia PA, Rossmeisl JH Jr., Robertson J, et al.: Pilot study of irreversible electroporation for intracranial surgery. *Conf Proc IEEE Eng Med Biol Soc* 2009;2009:6513–6516.
 15. Rubinsky J, Onik G, Mikus P, et al.: Optimal parameters for the destruction of prostate cancer using irreversible electroporation. *J Urol* 2008;180:2668–2674.
 16. Mir LM: Therapeutic perspectives of in vivo cell electroporation. *Bioelectrochemistry* 2001;53:1–10.
 17. Neal RE, Davalos RV: The feasibility of irreversible electroporation for the treatment of breast cancer and other heterogeneous systems. *Ann Biomed Eng* 2009;37:2615–2625.
 18. Daniels C, Rubinsky B: Electrical field and temperature model of nonthermal irreversible electroporation in heterogeneous tissues. *J Biomech Eng* 2009;131:071006.
 19. Edd JF, Davalos RV: Mathematical modeling of irreversible electroporation for treatment planning. *Technol Cancer Res Treat* 2007;6:275–286.
 20. Lee EW, Loh CT, Kee ST: Imaging guided percutaneous irreversible electroporation: Ultrasound and immunohistological correlation. *Technol Cancer Res Treat* 2007;6:287–294.
 21. Granot Y, Ivorra A, Maor E, et al.: In vivo imaging of irreversible electroporation by means of electrical impedance tomography. *Phys Med Biol* 2009;54:4927–4943.
 22. Goldberg SN, Mallery S, Gazelle GS, et al.: EUS-guided radiofrequency ablation in the pancreas: Results in a porcine model. *Gastrointest Endosc* 1999;50:392–401.
 23. Di MF, Martino M, Rea R, et al.: EUS-guided Nd:YAG laser ablation of normal pancreatic tissue: A pilot study in a pig model. *Gastrointest Endosc* 2010;72:358–363.
 24. Matthes K, Mino-Kenudson M, Sahani DV, et al.: Concentration-dependent ablation of pancreatic tissue by EUS-guided ethanol injection. *Gastrointest Endosc* 2007;65:272–277.
 25. Sugito K, Kusafuka T, Hoshino M, et al.: Application of radiofrequency ablation for giant solid pseudopapillary tumor of the pancreas. *Pediatr Int* 2010;52:e29–e31.
 26. Date RS, Siriwardena AK: Radiofrequency ablation of the pancreas. II: Intra-operative ablation of non-resectable pancreatic cancer. A description of technique and initial outcome. *JOP* 2005;6:588–592.
 27. Date RS, Biggins J, Paterson I, et al.: Development and validation of an experimental model for the assessment of radiofrequency ablation of pancreatic parenchyma. *Pancreas* 2005;30: 266–271.
 28. [Synopsis for Table of Contents^{Q4}](#).

Q1: Author: The Journal's copyeditors have taken care to format your authorship according to journal style (First name, Middle Initial, Surname). In the event a formatting error escaped their inspection, or there was insufficient information to apply journal style, please take a moment to review all author names and sequences to ensure the accuracy of the authorship in the published article. Please note that this information will also affect external indexes referencing this paper.

Q2: Author: The references 10 and 13 are identical hence latter one has been deleted and references are renumbered sequentially. Please check.

Q3: Author: Please provide the state name.

Q4: Author: The use of thermal tumor ablative techniques in the pancreas has been limited due to the risk of pancreatitis and damage to major vascular structures, non-thermal irreversible electroporation (IRE) may offer an alternative. This animal model demonstrates that IRE of the pancreas, when performed at an optimal voltage, is well tolerated, with rapid resolution of pancreatic inflammation and preservation of vascular structures.

COLOR REPRODUCTION IN YOUR ARTICLE

In the event that color figures were included with the final manuscript files that we received for your article, this form must be completed and returned with your corrected article proofs. Because of the high cost of color printing, we can only print figures in color if authors cover the expense.

Please indicate if you would like your figures to be printed in color or black and white. Color images will be reproduced online in *Wiley InterScience* at no charge, whether or not you opt for color printing.

You will be invoiced for color charges once the article has been published in print.

Failure to return this form with your article proofs will delay the publication of your article.

JOURNAL JOURNAL OF SURGICAL ONCOLOGY

MS. NO. _____ NO. OF COLOR PAGES _____

TITLE OF MANUSCRIPT _____

AUTHOR(S) _____

No. Color Pages	Color Charges	No. Color Pages	Color Charges	No. Color Pages	Color Charges
<input type="checkbox"/> 1	950	<input type="checkbox"/> 5	<input type="checkbox"/> 3400	9	<input type="checkbox"/> 5850
<input type="checkbox"/> 2	1450	<input type="checkbox"/> 6	<input type="checkbox"/> 3900	10	<input type="checkbox"/> 6350
<input type="checkbox"/> 3	1950	<input type="checkbox"/> 7	<input type="checkbox"/> 4400	11	<input type="checkbox"/> 6850
<input type="checkbox"/> 4	2450	<input type="checkbox"/> 8	<input type="checkbox"/> 4900	12	<input type="checkbox"/> 7350

*****Please contact JSOprod@wiley.com for a quote if you have more than 12 pages of color*****

Please print my figures in black and white

Please print my figures in color

Please print the following figures in color:

BILLING

ADDRESS: _____



Additional reprint and journal issue purchases

Should you wish to purchase additional copies of your article, please click on the link and follow the instructions provided:
<https://caesar.sheridan.com/reprints/redir.php?pub=10089&acro=JSO>

Corresponding authors are invited to inform their co-authors of the reprint options available.

Please note that regardless of the form in which they are acquired, reprints should not be resold, nor further disseminated in electronic form, nor deployed in part or in whole in any marketing, promotional or educational contexts without authorization from Wiley. Permissions requests should be directed to mailto: permissionsus@wiley.com

For information about 'Pay-Per-View and Article Select' click on the following link: <http://wileyonlinelibrary.com/ppv>

COPYRIGHT TRANSFER AGREEMENT



Date: _____ Contributor name: _____

Contributor address: _____

Manuscript number (Editorial office only): _____

Re: Manuscript entitled _____

_____ (the "Contribution")

for publication in _____ (the "Journal")

published by _____ ("Wiley-Blackwell").

Dear Contributor(s):

Thank you for submitting your Contribution for publication. In order to expedite the editing and publishing process and enable Wiley-Blackwell to disseminate your Contribution to the fullest extent, we need to have this Copyright Transfer Agreement signed and returned as directed in the Journal's instructions for authors as soon as possible. If the Contribution is not accepted for publication, or if the Contribution is subsequently rejected, this Agreement shall be null and void. **Publication cannot proceed without a signed copy of this Agreement.**

A. COPYRIGHT

1. The Contributor assigns to Wiley-Blackwell, during the full term of copyright and any extensions or renewals, all copyright in and to the Contribution, and all rights therein, including but not limited to the right to publish, republish, transmit, sell, distribute and otherwise use the Contribution in whole or in part in electronic and print editions of the Journal and in derivative works throughout the world, in all languages and in all media of expression now known or later developed, and to license or permit others to do so.

2. Reproduction, posting, transmission or other distribution or use of the final Contribution in whole or in part in any medium by the Contributor as permitted by this Agreement requires a citation to the Journal and an appropriate credit to Wiley-Blackwell as Publisher, and/or the Society if applicable, suitable in form and content as follows: (Title of Article, Author, Journal Title and Volume/Issue, Copyright © [year], copyright owner as specified in the Journal). Links to the final article on Wiley-Blackwell's website are encouraged where appropriate.

B. RETAINED RIGHTS

Notwithstanding the above, the Contributor or, if applicable, the Contributor's Employer, retains all proprietary rights other than copyright, such as patent rights, in any process, procedure or article of manufacture described in the Contribution.

C. PERMITTED USES BY CONTRIBUTOR

1. **Submitted Version.** Wiley-Blackwell licenses back the following rights to the Contributor in the version of the Contribution as originally submitted for publication:

a. After publication of the final article, the right to self-archive on the Contributor's personal website or in the Contributor's institution's/employer's institutional repository or archive. This right extends to both intranets and the Internet. The Contributor may not update the submission version or replace it with the published Contribution. The version posted must contain a legend as follows: This is the pre-peer reviewed version of the following article: FULL CITE, which has been published in final form at [Link to final article].

b. The right to transmit, print and share copies with colleagues.

2. **Accepted Version.** Re-use of the accepted and peer-reviewed (but not final) version of the Contribution shall be by separate agreement with Wiley-Blackwell. Wiley-Blackwell has agreements with certain funding agencies governing reuse of this version. The details of those relationships, and other offerings allowing open web use, are set forth at the following website: <http://www.wiley.com/go/funderstatement>. NIH grantees should check the box at the bottom of this document.

3. **Final Published Version.** Wiley-Blackwell hereby licenses back to the Contributor the following rights with respect to the final published version of the Contribution:

a. Copies for colleagues. The personal right of the Contributor only to send or transmit individual copies of the final published version in any format to colleagues upon their specific request provided no fee is charged, and further-provided that there is no systematic distribution of the Contribution, e.g. posting on a listserve, website or automated delivery.

b. Re-use in other publications. The right to re-use the final Contribution or parts thereof for any publication authored or edited by the Contributor (excluding journal articles) where such re-used material constitutes less than half of the total material in such publication. In such case, any modifications should be accurately noted.

c. Teaching duties. The right to include the Contribution in teaching or training duties at the Contributor's institution/place of employment including in course packs, e-reserves, presentation at professional conferences, in-house training, or distance learning. The Contribution may not be used in seminars outside of normal teaching obligations (e.g. commercial seminars). Electronic posting of the final published version in connection with teaching/training at the Contributor's institution/place of employment is permitted subject to the implementation of reasonable access control mechanisms, such as user name and password. Posting the final published version on the open Internet is not permitted.

d. Oral presentations. The right to make oral presentations based on the Contribution.

4. **Article Abstracts, Figures, Tables, Data Sets, Artwork and Selected Text (up to 250 words).**

a. Contributors may re-use unmodified abstracts for any non-commercial purpose. For on-line uses of the abstracts, Wiley-Blackwell encourages but does not require linking back to the final published versions.

b. Contributors may re-use figures, tables, data sets, artwork, and selected text up to 250 words from their Contributions, provided the following conditions are met:

(i) Full and accurate credit must be given to the Contribution.

(ii) Modifications to the figures, tables and data must be noted. Otherwise, no changes may be made.

(iii) The reuse may not be made for direct commercial purposes, or for financial consideration to the Contributor.

(iv) Nothing herein shall permit dual publication in violation of journal ethical practices.

D. CONTRIBUTIONS OWNED BY EMPLOYER

1. If the Contribution was written by the Contributor in the course of the Contributor's employment (as a "work-made-for-hire" in the course of employment), the Contribution is owned by the company/employer which must sign this Agreement (in addition to the Contributor's signature) in the space provided below. In such case, the company/employer hereby assigns to Wiley-Blackwell, during the full term of copyright, all copyright in and to the Contribution for the full term of copyright throughout the world as specified in paragraph A above.

2. In addition to the rights specified as retained in paragraph B above and the rights granted back to the Contributor pursuant to paragraph C above, Wiley-Blackwell hereby grants back, without charge, to such company/employer, its subsidiaries and divisions, the right to make copies of and distribute the final published Contribution internally in print format or electronically on the Company's internal network. Copies so used may not be resold or distributed externally. However the company/employer may include information and text from the Contribution as part of an information package included with software or other products offered for sale or license or included in patent applications. Posting of the final published Contribution by the institution on a public access website may only be done with Wiley-Blackwell's written permission, and payment of any applicable fee(s). Also, upon payment of Wiley-Blackwell's reprint fee, the institution may distribute print copies of the published Contribution externally.

E. GOVERNMENT CONTRACTS

In the case of a Contribution prepared under U.S. Government contract or grant, the U.S. Government may reproduce, without charge, all or portions of the Contribution and may authorize others to do so, for official U.S. Govern-

ment purposes only, if the U.S. Government contract or grant so requires. (U.S. Government, U.K. Government, and other government employees: see notes at end)

F. COPYRIGHT NOTICE

The Contributor and the company/employer agree that any and all copies of the final published version of the Contribution or any part thereof distributed or posted by them in print or electronic format as permitted herein will include the notice of copyright as stipulated in the Journal and a full citation to the Journal as published by Wiley-Blackwell.

G. CONTRIBUTOR'S REPRESENTATIONS

The Contributor represents that the Contribution is the Contributor's original work, all individuals identified as Contributors actually contributed to the Contribution, and all individuals who contributed are included. If the Contribution was prepared jointly, the Contributor agrees to inform the co-Contributors of the terms of this Agreement and to obtain their signature to this Agreement or their written permission to sign on their behalf. The Contribution is submitted only to this Journal and has not been published before. (If excerpts from copyrighted works owned by third parties are included, the Contributor will obtain written permission from the copyright owners for all uses as set forth in Wiley-Blackwell's permissions form or in the Journal's Instructions for Contributors, and show credit to the sources in the Contribution.) The Contributor also warrants that the Contribution contains no libelous or unlawful statements, does not infringe upon the rights (including without limitation the copyright, patent or trademark rights) or the privacy of others, or contain material or instructions that might cause harm or injury.

CHECK ONE BOX:

Contributor-owned work

ATTACH ADDITIONAL SIGNATURE
PAGES AS NECESSARY

Contributor's signature _____

Date _____

Type or print name and title _____

Co-contributor's signature _____

Date _____

Type or print name and title _____

Company/Institution-owned work
(made-for-hire in the
course of employment)

Company or Institution (Employer-for-Hire) _____

Date _____

Authorized signature of Employer _____

Date _____

U.S. Government work

Note to U.S. Government Employees

A contribution prepared by a U.S. federal government employee as part of the employee's official duties, or which is an official U.S. Government publication, is called a "U.S. Government work," and is in the public domain in the United States. In such case, the employee may cross out Paragraph A.1 but must sign (in the Contributor's signature line) and return this Agreement. If the Contribution was not prepared as part of the employee's duties or is not an official U.S. Government publication, it is not a U.S. Government work.

U.K. Government work
(Crown Copyright)

Note to U.K. Government Employees

The rights in a Contribution prepared by an employee of a U.K. government department, agency or other Crown body as part of his/her official duties, or which is an official government publication, belong to the Crown. U.K. government authors should submit a signed declaration form together with this Agreement. The form can be obtained via <http://www.opsi.gov.uk/advice/crown-copyright/copyright-guidance/publication-of-articles-written-by-ministers-and-civil-servants.htm>

Other Government work

Note to Non-U.S., Non-U.K. Government Employees

If your status as a government employee legally prevents you from signing this Agreement, please contact the editorial office.

NIH Grantees

Note to NIH Grantees

Pursuant to NIH mandate, Wiley-Blackwell will post the accepted version of Contributions authored by NIH grant-holders to PubMed Central upon acceptance. This accepted version will be made publicly available 12 months after publication. For further information, see www.wiley.com/go/nihmandate.